

**Report of North East Divisional Community Safety Partnership**

**Report to Inner North East Area Committee**

**Date: 17<sup>th</sup> June 2013**

**Subject: North East Divisional Community Safety Partnership Annual Report**

Are specific electoral Wards affected?	<input checked="" type="checkbox"/> Yes	<input type="checkbox"/> No
If relevant, name(s) of Ward(s):		
Chapel Allerton		
Roundhay		
Moortown		
Are there implications for equality and diversity and cohesion and integration?	<input type="checkbox"/> Yes	<input checked="" type="checkbox"/> No
Is the decision eligible for Call-In?	<input type="checkbox"/> Yes	<input checked="" type="checkbox"/> No
Does the report contain confidential or exempt information?	<input type="checkbox"/> Yes	<input checked="" type="checkbox"/> No
If relevant, Access to Information Procedure Rule number:		
Appendix number:		

**Summary of main issues**

1. To update ward members of the overall performance of the North East Divisional Community Safety Partnership and Neighbourhood Policing Teams for 2012/13.
2. To provide an overview of the work undertaken by the partnership within the locality to reduce crime and disorder.

**Recommendations**

3. The Area Committee is asked to note the contents of this report of the North East Divisional Community Safety Partnership.
4. Members are asked to continue supporting the Divisional Community Safety Partnership in relation to prioritising the new Safer Leeds Priorities and tackling Burglary Dwelling during 2013/14 through partnership work at neighbourhood level.

## **1. Purpose of this report**

### **The report will focus on the following key issues:**

- Update members on progress and outputs of the neighbourhood management tasking arrangements
- Report on thematic sub groups and activities
- Report on the performance of the North East Police Division and partnership
- Summary of ward crime statistics, public confidence and user satisfaction
- Report on multi agency 'Operation Champions'
- Report on agreed community initiatives funded via Proceeds of Crime confiscations (POCA)

## **2. Background information**

- 2.1 This report provides Members of the Area Committee with an overview of the performance of the North East Divisional Community Safety Partnership and ward based Neighbourhood Policing Teams. It will also include details of the key initiatives that have been delivered in local communities to reduce crime and disorder. The report focuses upon the period 1<sup>st</sup> April 2012 to 31<sup>st</sup> March 2013.

## **3. Main issues**

### **3.1 Performance Framework**

- 3.2 The Divisional Community Safety Partnership (DCSP) will continue to develop activity and management performance against strategic outcomes of the city, defined by The Safer and Stronger Communities Board Partnership plan 2011-2015 which will focus on delivering the following strategic priorities:

- Reducing crime levels and its impact across Leeds
- Effectively Tackle and Reduce Anti-social behaviour in our Communities

- 3.3 The North East Police Divisional Targets are outlined in (Appendix A)

- 3.4 Safer Leeds has six key priorities for 2013/14

- Reducing burglary and anti social behaviour
- Tackling domestic abuse
- Reducing re offending
- Improving our understanding of child sexual exploitation
- Dealing with dangerous 'Legal Highs ' and cannabis
- Strengthening community engagement and support to victims

3.5 Attached is an updated structure chart for the North East Divisional Community Safety Partnership (see Appendix B) with details of the relevant lead officers. The structure is continuously reviewed to ensure delivery against new priorities.

#### **4. Operation Champion**

4.1 A number of 'multi agency operation days of action' have been carried out across the ward during 2012/13 and have been based around themes and deployed into areas of concern. We will continue to deliver operations during 2013/14 with a minimum requirement of four operations per year per Neighbourhood policing team.

#### **5. Operation Outwork**

5.1 As the scrap metal market maintains its consistently high prices the theft of metal continues to be a problem across the North East Leeds Policing area. Whether it is cable theft, burglary other, general theft non specifics or full blown burglary dwellings the target is often metal in order for the criminals to cash in.

5.2 Joint partnership operations between Neighbourhood Policing Teams and the Environmental Locality Team were delivered on a monthly basis and will continue through 2013. These operations include setting up road checks and routine stopping of waste carrier vehicles in order to complete checks on such vehicles. Police staff conduct normal police checks on all passengers and pay attention to the condition of such vehicles alongside East North East Environmental Locality team staff that provide trained expertise regarding waste carrier licence/rules and conditions.

#### **6. POCA**

6.1 The North East Division allocated a further £29,000 and carried forward £9187.85 from 11/12 totalling £38,197.85 funding confiscated from criminals under the Proceeds of Crime Act to the Divisional Community Safety Partnership during 2012/13 to support local groups with community projects/activities. In total, across the whole division, we approved and funded 123 applications and spent £33,243. We continue to receive positive feedback from the community. Information regarding the awards continues to be advertised in the Neighbourhood Management / Neighbourhood Policing Team newsletters and on the police Neighbourhood Policing Team websites. We will be continuing the scheme into 2013/14 (Appendix C provides a summary of projects funded in the Inner North East Area).

#### **7. Confidence and Satisfaction**

7.1 North East Leeds continues to have the highest public confidence in local policing during 2012/13 at 60.5% (March 2013) compared with the West Yorkshire force average of 53.9%.

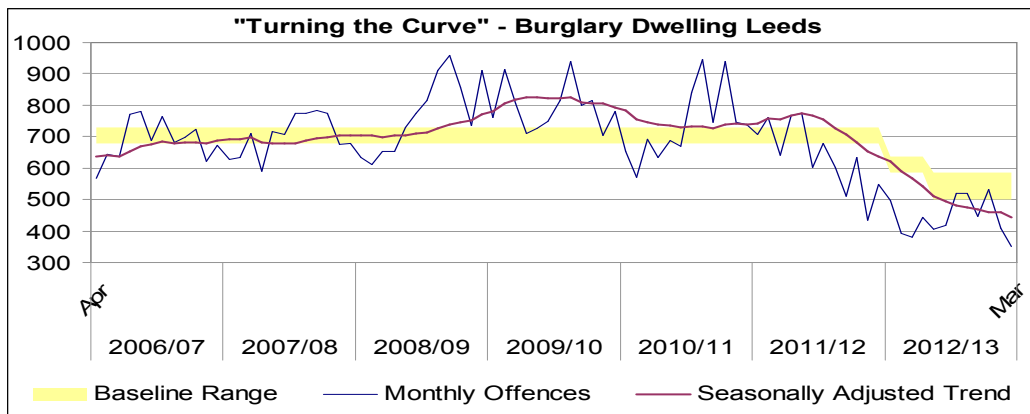
7.2 Operation Confidence continued during 2012/13 with two editions and is a contributing factor to the high rates of public confidence. The North East Division produces 11 neighbourhood management newsletters detailing partnership activity around crime and grime within the Neighbourhood Policing Team and delivers to approximately 128,000 households. The initiative has been funded by North East Police Division, East North East

Homes, Safer Leeds Partnership and Aire Valley Homes, we are anticipating securing funding for 2013/14 for a further two editions whilst investigating other options alongside social media such as Facebook and Twitter to improve engagement with local communities.

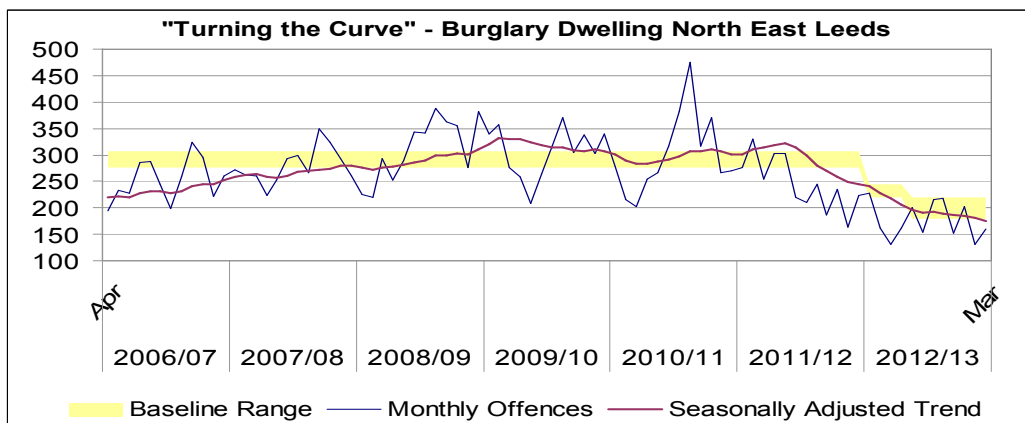
## 8. Burglary Dwelling

8.1 Burglary Dwelling remains a key priority in relation to allocation of resources both staffing and financial. Tackling burglary dwelling remains the key priority within the division and across the whole of Leeds, we are working closely with Safer Leeds Strategic Burglary Group and partner agencies to maximise opportunities for closer working, sharing good practise and continue to deliver initiatives at a local neighbourhood level.

8.2 Overall a very successful year in 2012/13 there were 5,305 recorded domestic burglaries in Leeds, down 30.8% when compared with the previous year equivalent to 2357 fewer victims.



8.3 Overall year to date burglary offences for North East Leeds are down 28.35 % on the same period last year (833 less offences).



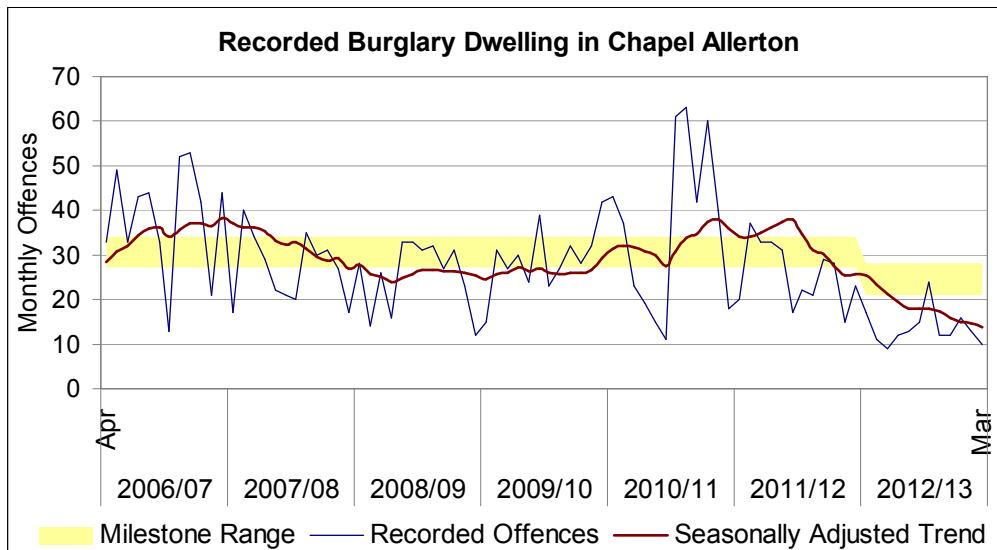
## 9. Ward Risk Matrix

- 9.1 During 2012/13 there were nine strategic localities of concern. The inner north east area committee area had one locality of concern, Chapel Allerton Ward ranking at 9th place in 2012. The strategic burglary group are currently reviewing best practise in relation to partnership work and reviewing the localities of concern for 2013/14. The Divisional Community Safety Partnership have recommended Roundhay ward to be the focus for additional partnership work on reducing burglary dwelling during 13/14 from the Inner North East Committee Area. An outcome accountability session took place in May 2013..

Ward	Apr-12	May-12	Jun-12	Jul-12	Aug-12	Sep-12	Oct-12	Nov-12	Dec-12	Jan-13	Feb-13	Mar-13	12 Month Total	12 Month % Change	3 Month Change
Hyde Park & Woodhouse	Very High Concern	High Concern	High Concern	High Concern	High Concern	High Concern	High Concern	High Concern	High Concern	High Concern	High Concern	High Concern	328	-45.1%	-43.7%
Burmantofts & Richmond Hill	High Concern	High Concern	High Concern	High Concern	High Concern	High Concern	High Concern	High Concern	High Concern	High Concern	High Concern	High Concern	289	-29.0%	-31.1%
Gipton & Harehills	High Concern	High Concern	High Concern	High Concern	High Concern	High Concern	High Concern	High Concern	High Concern	High Concern	High Concern	High Concern	280	-26.9%	-1.4%
Armley	High Concern	High Concern	High Concern	High Concern	High Concern	High Concern	High Concern	High Concern	High Concern	High Concern	High Concern	High Concern	252	-35.4%	-13.8%
Headingley	High Concern	High Concern	High Concern	High Concern	High Concern	High Concern	High Concern	High Concern	High Concern	High Concern	High Concern	High Concern	230	-43.5%	-61.4%
Roundhay	High Concern	High Concern	High Concern	High Concern	High Concern	High Concern	High Concern	High Concern	High Concern	High Concern	High Concern	High Concern	225	0.0%	-20.3%
Killingbeck & Seacroft	High Concern	High Concern	High Concern	High Concern	High Concern	High Concern	High Concern	High Concern	High Concern	High Concern	High Concern	High Concern	221	-38.8%	-8.8%
Middleton Park	High Concern	High Concern	High Concern	High Concern	High Concern	High Concern	High Concern	High Concern	High Concern	High Concern	High Concern	High Concern	215	11.4%	-21.0%
Beeston & Holbeck	High Concern	High Concern	High Concern	High Concern	High Concern	High Concern	High Concern	High Concern	High Concern	High Concern	High Concern	High Concern	205	-3.3%	-22.2%
Kirkstall	High Concern	High Concern	High Concern	High Concern	High Concern	High Concern	High Concern	High Concern	High Concern	High Concern	High Concern	High Concern	203	-43.3%	52.3%
Cross Gates & Whinmoor	High Concern	High Concern	High Concern	High Concern	High Concern	High Concern	High Concern	High Concern	High Concern	High Concern	High Concern	High Concern	182	-38.9%	-10.0%
Weetwood	High Concern	High Concern	High Concern	High Concern	High Concern	High Concern	High Concern	High Concern	High Concern	High Concern	High Concern	High Concern	182	-25.7%	7.5%
Bramley & Stanningley	High Concern	High Concern	High Concern	High Concern	High Concern	High Concern	High Concern	High Concern	High Concern	High Concern	High Concern	High Concern	181	-56.9%	122.9%
Temple Newsam	High Concern	High Concern	High Concern	High Concern	High Concern	High Concern	High Concern	High Concern	High Concern	High Concern	High Concern	High Concern	179	-27.8%	-20.3%
Farnley & Wortley	High Concern	High Concern	High Concern	High Concern	High Concern	High Concern	High Concern	High Concern	High Concern	High Concern	High Concern	High Concern	175	-39.7%	-23.3%
City & Hunslet	High Concern	High Concern	High Concern	High Concern	High Concern	High Concern	High Concern	High Concern	High Concern	High Concern	High Concern	High Concern	170	-17.5%	2.2%
Pudsey	High Concern	High Concern	High Concern	High Concern	High Concern	High Concern	High Concern	High Concern	High Concern	High Concern	High Concern	High Concern	170	-30.6%	7.3%
Calverley & Farsley	High Concern	High Concern	High Concern	High Concern	High Concern	High Concern	High Concern	High Concern	High Concern	High Concern	High Concern	High Concern	167	-32.1%	-35.0%
Chapel Allerton	High Concern	High Concern	High Concern	High Concern	High Concern	High Concern	High Concern	High Concern	High Concern	High Concern	High Concern	High Concern	164	-46.9%	-18.8%
Moortown	High Concern	High Concern	High Concern	High Concern	High Concern	High Concern	High Concern	High Concern	High Concern	High Concern	High Concern	High Concern	154	-35.3%	-50.0%
Alwoodley	High Concern	High Concern	High Concern	High Concern	High Concern	High Concern	High Concern	High Concern	High Concern	High Concern	High Concern	High Concern	138	-15.3%	-32.4%
Horsforth	High Concern	High Concern	High Concern	High Concern	High Concern	High Concern	High Concern	High Concern	High Concern	High Concern	High Concern	High Concern	127	-18.6%	-6.1%
Morley North	High Concern	High Concern	High Concern	High Concern	High Concern	High Concern	High Concern	High Concern	High Concern	High Concern	High Concern	High Concern	121	-14.2%	34.6%
Adel & Wharfedale	High Concern	High Concern	High Concern	High Concern	High Concern	High Concern	High Concern	High Concern	High Concern	High Concern	High Concern	High Concern	105	-34.8%	10.0%
Harewood	High Concern	High Concern	High Concern	High Concern	High Concern	High Concern	High Concern	High Concern	High Concern	High Concern	High Concern	High Concern	91	4.6%	26.3%
Rothwell	High Concern	High Concern	High Concern	High Concern	High Concern	High Concern	High Concern	High Concern	High Concern	High Concern	High Concern	High Concern	88	-11.1%	47.4%
Morley South	High Concern	High Concern	High Concern	High Concern	High Concern	High Concern	High Concern	High Concern	High Concern	High Concern	High Concern	High Concern	82	-24.8%	-34.4%
Wetherby	High Concern	High Concern	High Concern	High Concern	High Concern	High Concern	High Concern	High Concern	High Concern	High Concern	High Concern	High Concern	78	6.8%	125.0%
Otley & Yeadon	High Concern	High Concern	High Concern	High Concern	High Concern	High Concern	High Concern	High Concern	High Concern	High Concern	High Concern	High Concern	69	-20.7%	-42.9%
Garforth & Swillington	High Concern	High Concern	High Concern	High Concern	High Concern	High Concern	High Concern	High Concern	High Concern	High Concern	High Concern	High Concern	64	-28.9%	83.3%
Ardsley & Robin Hood	High Concern	High Concern	High Concern	High Concern	High Concern	High Concern	High Concern	High Concern	High Concern	High Concern	High Concern	High Concern	63	-14.9%	-33.3%
Guiseley & Rawdon	High Concern	High Concern	High Concern	High Concern	High Concern	High Concern	High Concern	High Concern	High Concern	High Concern	High Concern	High Concern	53	-39.1%	7.1%
Kippax & Methley	High Concern	High Concern	High Concern	High Concern	High Concern	High Concern	High Concern	High Concern	High Concern	High Concern	High Concern	High Concern	50	-35.1%	-9.1%

## 10. Chapel Allerton Ward

- 10.1 A very successful year in relation to reduction of overall burglary dwelling within the ward, the ward was ranked 16th at 31st March 2013 compared to 9th the previous year (2012) and a significant reduction of 47%. The burglary action plan developed with key partner agencies was delivered during 12/13 and incorporated key strands including offender management, stolen goods market, reducing victimisation and crime reduction. Significant financial investment was provided by East North East Homes to continue the target hardening initiative of ALMO properties alongside allocations from area committee to support security improvements to vulnerable tenants in the private rented sector and owner occupiers.



10.2 Victims of burglary continue to be revisited by police community safety officers and offered trembler alarms funded by the area committee. There have been several incidents across the ward where the alarms have activated and deterred burglars.

**11. April 2012 to March 2013**

Month	Offences	Average To Date
Apr-12	17	17
May-12	11	14
Jun-12	9	12
Jul-12	12	12
Aug-12	13	12
Sep-12	15	13
Oct-12	24	14
Nov-12	12	14
Dec-12	12	14
Jan-13	16	14
Feb-13	13	14
Mar-13	10	14
<b>Year to Date</b>	<b>164</b>	<b>14</b>

Month	Cumulative 2012-13	Cumulative 2011-12	Change
Apr	17	20	-3
May	28	57	-29
Jun	37	90	-53
Jul	49	123	-74
Aug	62	154	-92
Sep	77	171	-94
Oct	101	193	-92
Nov	113	214	-101
Dec	125	243	-118
Jan	141	271	-130
Feb	154	286	-132
Mar	164	309	-145
<b>-47% Change Year to Date</b>			

11.1 Out-turn was 164 offences, falling by 47% in 2012/13 compared with 2011/12.

**12. Most Active / Amber Nominals / Burglary Group**

12.1 The group continues to meet on a six weekly basis and looks at how best to manage individuals offending behaviour through offering support through targeted services or taking enforcement action. The youth offending service have widened their remit to offer voluntary support to those wishing to engage outside of the criminal justice system. We have developed close working relationships with targeted services and refer into guidance and support structures.

**13. Neighbourhood Management Tasking Key Achievements 2012/13**

- 13.1 The eleven neighbourhood management tasking teams continue to meet six weekly and are still firmly embedded into agencies day to day business. Members continue to be invited to attend and support meetings.
- 13.2 This is not an exhaustive list of activities but includes key achievements from each of the neighbourhood management tasking teams within the inner north east area

#### **14. Chapel Allerton**

- 14.1 Clean-up of derelict land on Chapel Road to reduce risk and complaints from residents and improve local perceptions. Increased Police patrolling in Chapel Road area to reduce fears of residents and reduce offending in the locality
- 14.2 Completed two dangerous dog operations in Potternewton Park and Chapel Allerton Park seizing one dog and handing out literature and reassurance to users of the park.
- 14.3 Implementation and assistance with the Saville and Mexborough Environmental Improvement Zone
- 14.4 Operation Champion took place 12.04.12 with approx. 60 staff from multi agency team stopping vehicles on Scott Hall Road, door knocking identified hot spot streets and providing reassurance visits in addition to targeting nominals
- 14.5 Probation referral to Chapel Road to clear of vegetation and litter sweep.
- 14.6 Post carnival operation to clear the streets of litter and vegetation involving LCC Street Scene and West Yorkshire Probation
- 14.7 Operation Champion organised by ENEHL in the Scott Hall area targeting environmental issues in the locality and looking to provide reassurance following a racist incident
- 14.8 Notice served by LASBT following information and intelligence relating to drug dealing at an specific addresses.
- 14.9 Visits by Connect housing to a property following repeated concerns from LCC Noise Nuisance team
- 14.10 A multi-agency problem solving group has been set up in March 2013 to tackle the on-going problem of anti-social use of off-road bikes and motorcycles in the Meanwood Five Estates area and the Scott Halls. This is a local priority for the NPT and it attracts repeat calls for service. In some cases, it can be linked to drug dealing. Police enforcement action has focused on the use of the local NPT and off-road bikes to deliver s.59 warnings and seize vehicles
- 14.11 A letter drop by the NPT around the hotspots has encouraged further information from the community
- 14.12 Youth Services are exploring ways to expand the existing Bumpy project to provide further diversionary opportunities
- 14.13 Housing are using police referrals to explore relevant legislation and warnings
- 14.14 The NPT and Voluntary sector will explore educational opportunities with youth groups

#### **15. Roundhay / Moortown**

- 15.1 Launch of Paradowatch with shopkeepers and ENELH and LASBT.
- 15.2 On-going environmental improvements on the Darkwood estate.
- 15.3 **Operation Aphid** – A targeted operation in Roundhay Park during school holidays to prevent crime and tackle ASB especially in relation to the Skateboard Park.

- 15.4 **Operation Bellwether** - tackling burglary dwelling and featuring the darker night's initiative. Proactive patrols by police officers in plain clothes and uniform, additional resources including LCC CCTV van, Road Crimes Team, ANPR operations. PCSO patrols, revisits to victims and neighbours, distribution of trembler alarms Work with LASBT and Housing providers to take enforcement action against local offenders
- 15.5 Crime reduction road shows at retail outlets including Tesco Roundhay Road, Asda Meanwood, and Sainsburys Moor Allerton. Promoting Immobilise the national property register database. Joint work with CASAC in Montagu Crescent offering further target hardening against euro profile burglaries
- 15.6 **Operation Bushbrier** – A partnership operation to tackle increase in shed and garage burglaries where pedal cycles stolen. PCSO revisits to crime scenes offering crime prevention advice in conjunction with CASAC. Promoting Immobilise the national property register database. Crime reduction road show in conjunction with Edinburgh Cycles Chapel Allerton. Purchase of discounted D-locks with support from local councillors small grants which are sold to victims to prevent repeat offences.
- 15.7 **Operation Bearview** - A partnership approach due to the increase in theft from shops established a Retail Crime Initiative. Specific work with Co-op stores who are reporting disproportionately high levels of crime. Engagement with LASBT and Housing providers to look at joint action against offenders. Work with support agencies especially with regard to drug using offenders
- 15.8 **Operation Binary** - On-going partnership work to tackle crime, ASB, and drug dealing on Stonegate estate. Tenancy enforcement by Unity suspended possession order for address Stonegate Grove. Gating order supported by LCC for ginnel at rear Stonegate Grove and now installed. This operation has been nominated for a West Yorkshire Police Excel award relating to partnership work
- 15.9 **Schools parking initiative** – On-going problem solving with schools by PCSO's. Working in conjunction with primary schools. A more recent initiative involved designing new impactive banners to raise awareness and accountability for this issue outside schools. A significant number of primary schools have invested in this initiative.

## 16. Thematic Sub Groups and Activities

### 17. Gang Prevention Strategy

- 17.1 The Chapeltown Gang Prevention Strategy Group continues to meet on a quarterly basis and is chaired by Martin Snowden (Superintendent Operations) at North East Police Division. The strategy continued to focus on the following three strands during 2012/13:
- Community Engagement and Cohesion
  - Diversionary and Youth Working/ Education
  - Enforcement and Offender Management
- 17.2 The Strategy group have agreed a new mission's statement and are currently reviewing priorities for 2013/14 with a view of developing a longer term strategy for the area.

### 18. Operation Quartz

- 18.1 The Chapeltown area remains a key priority for enforcement activity and planned operations as part of planned integrated offender management tactics to keep drugs and associated issues out of the Chapeltown area and rehabilitate and resettle ex-offenders.



## **19. Bonfire Night Bonanza 2012**

19.1 Following the success of the roller ball disco in 2011, young people were consulted and it was agreed that we would support Free2Bme (Chapelton Youth Development Centre) in coordinating another event on 5th November 2012. The event was funded by the clusters of schools, ward councillors and proceed of crimes funding .The event attracted approximately 130 young people and we received positive feedback.

## **20. Home Office Peer Review - Ending Youth Gang and Violence**

20.1 In Feb 2012 an expression of interest was submitted to the Home office for their second tranche of funding but was unsuccessful, however the local authority was offered the opportunity of undergoing a peer review assessment. Although the assessment was across Leeds the focus on the review was on the Chapelton area of Leeds and took place week commencing 18th March 2013.

20.2 The review is a constructive and supportive process with the central aim of helping partnerships improve on how they deliver outcomes in tackling gangs and youth violence. It is not an inspection nor does it award any form of rating category. It is undertaken from the viewpoint of a 'critical friend'. There is an emphasis on self-assessment and the challenge of accelerating practical improvement, rather than diagnosing issues.

20.3 A self-assessment was submitted which provided a framework for external challenge.

20.4 The review involves an assessment against the national and international experience and learning from working with gangs, which provide the essential elements for a successful gang prevention strategy. These are:

- Strong local leadership
- Mapping the problem
- Responding in partnership
- Assessment and referral
- Targeted and effective interventions (enforcement/pathways out/prevention)
- Criminal justice and breaking the cycle
- Mobilising communities.

20.5 We are currently awaiting a full report from the Home Office which will be used as a tool to develop our current partnership arrangements and determine future improvements in the Chapelton area.

## **21. Installation of CCTV**

21.1 In August 2012 three new cameras were installed in the following areas:

- Nassau Place on the junction with Grange View
- Nassau Place on the junction with Hamilton Avenue
- Savile Drive on the junction with Savile Avenue

21.2 Early evaluation has indicated that we have seen a reduction in reported crimes and the areas feature less frequently as hot spots for antisocial behaviour. A full evaluation will be undertaken by Safer Leeds Intelligence Unit in August 2013 and will provide a comparison to the previous year.

## **22. Off Road Bikes / West Yorkshire Police**

22.1 The inner North East Area Committee (June 2012) contributed towards the lease costs to retain 2 off road motorcycles within the division for a 12 months period.

22.2 The information below outlines some performance information and examples of successes in the Inner North East Area Committee area :

### **July- September 2012**

- Calls attended: 7
- Section 59 warnings: 5
- Vehicle seizures: 3
- Arrests/Summons: 2

### **October- December 2012**

- Calls attended: 4
- Section 59 warnings: 3
- Vehicle seizures: 1
- Arrests/Summons: 1

### **Jan- March 2013**

- Calls attended: 14
- Section 59 warnings: 2
- Vehicle seizures: 1
- Arrests/Summons: 5
- Cannabis warnings: 1
- Stop searches: 4
- Optimal patrols: 12

- Responding to a call of several teenagers taking turns to ride an off road motorcycle on Scott Hall Fields, officers stopped the rider just outside his home address. The motorcycle was seized and the driver reported for summons.
- A man from Gledhow decided to ride his Aprillia 125 registered and insured motorcycle. He was riding in tandem doing circuits and annoying residents so he was stopped and issued with a section 59 warning. Hours later he was seen again riding in a careless manner. He was visited at home and his motorcycle was seized. The recovery costs to get the motorcycle back are a minimum of £170.
- Following a series of calls in and around the Fir Trees and Lingfields in Moortown regarding a noisy yellow motorcycle patrols were stepped up. Following one call officers were at the scene in quick time and the motorcycle was dumped and a group of males ran off. The motorcycle was identified as being stolen two weeks before. Working with the local neighbourhood policing team the identity of the male using the motorcycle was found and he was interviewed regarding the theft and his house was searched.

- Responding to a call of teenagers taking turns to ride an off road motorcycle on Scott Hall Fields On seeing the officer the rider attempted to make off from him. The male was quickly stopped and dealt with accordingly. The bike in question was brand new and still had its plastic wrapping on the saddle. The motorcycle was seized and the rider reported for summons.
- The Unit has assisted in the search for and safe return of a number of children and adults that have been reported missing in and around the Roundhay Park area.
- As an additional resource the Unit has been actively involved in policing the Divisions hot spot areas and focusing on burglary around the Inner North East areas
- The unit has been utilised as a visible deterrent for ASB around the Pubs and Bars surrounding Chapel Allerton, offering support to the local PCSO's and Special Constables working the weekend late shifts.
- Following a report of three men trying to break into a house on Beckhill Vale the off road unit conducted an area search. The Beckhill estate has a vast network of alleyways and paths that make it easy for suspects to avoid being seen and get away. The off road motorcycles are ideally suited for making a rapid search of these and officers quickly located three men who matched the descriptions of the suspects. They were all searched and then arrested on suspicion of attempted burglary and taken to custody.
- Following an increase in complaints regarding nuisance motorcycles and Quads in the Potternewton / Scotthall areas patrols have been increased. The local neighbourhood officers passed on details about one particularly troublesome rider causing problems on his motorcycle which they were unable to get near. He was targeted and issued with a section 59 warning after driving through bollards and issued with a fixed penalty ticket for not fastening his chin strap on his helmet. Since then calls have dropped dramatically in the area.
- A man from the Farm Hill estate was stopped driving his Quad bike on the footpath near his home and issued with a section 59 warning.
- On Potternewton Lane officers observed some careless driving by a convicted drug dealer in a rented Ford Fiesta. He was stopped and found to have been issued with a section 59 warning in the last 12 months so his car was seized.

## **23. Hate Crime MARAC**

23.1 The hate Crime Multi-Agency Risk Assessment Conference (HC MARAC) continues to meet monthly. The overall objectives of the group is to:

- Support and assist victims of hate crime in order to protect them and ensure that they are not re-victimised.
- Ensure that effective co-ordinated multi agency enforcement action is taken against perpetrators of hate crime to prevent their re-offending and to ensure successful prosecution outcomes at Court.
- Contribute to the "Hate crime reduction agenda in Leeds".

23.2 During 2012/13 we have received positive feedback from residents, exits surveys illustrate that they are happy with the response and support they have received from partner agencies.

- 23.3 Overall the Inner North East area has shown a decrease of 11.4% in recorded hate crimes reported (see chart below)

INNER NORTH EAST		
Incidents	Change	% Change
78	-8	-11.4%

- 23.4 The chart below illustrates hate crimes by ward:

MOORTOWN			ROUNDHAY			CHAPEL ALLERTON		
Incidents	Change	% Change	Incidents	Change	% Change	Incidents	Change	% Change
18	-3	-14.3%	24	-6	-20.0%	36	1	2.9%

## 24. Domestic Violence MARAC

- 24.1 The North East Divisional MARAC continues to meet monthly to develop multi-agency interventions to support victims of domestic violence. Overall a very successful year in relation to reduction of repeat victimisation of cases managed through the MARAC.

## 25. Alleypating

- 25.1 Following requests from local residents the local crime and grime partnership have worked together with Safer Leeds, Unity Housing, and the Neighbourhood Policing Team and successfully secured a legal alleypating order to alleypate part of a footpath in the Stonegate estate in Meanwood. Extensive consultation has taken place with local residents whom have supported closure of the ginnel. As part of continuous partnership work to tackle crime and anti-social behaviour in the area, we have installed lockable pedestrian gates and matching fencing at both ends of a section of a footpath starting from the top of Stonegate View and running through to Stonegate Crescent. Access from Stonegate View to Stonegate Lane will be kept open. Residents living in Stonegate Crescent will be able to get to Stonegate Lane and View via the open land at the top of Stonegate Crescent. Residents whose properties back directly onto the proposed section of gated path are able to request a free key which will open the gates top and bottom of the footpath serving your property. The initiative has been funded and supported by Local ward councillors.

## 26. Cold Calling Zones

- 26.1 West Yorkshire Trading Standards worked alongside The Neighbourhood Policing Team, Leeds City Council and Safer Leeds to launch 33 New Cold Calling Control Zones within the Meanwood area, funded by the school cluster. The partnership decided to take action to protect vulnerable members of this community from rogue traders, distraction burglaries and doorstep criminals. We consulted closely with local residents to ensure the zones were supported and that the most susceptible streets were identified.

- 26.2 Cold Calling Control Zones aim to put off opportunists and provide residents with the knowledge they need to be safe within their homes but most importantly, the confidence to say NO to these people and prevent further incidents of doorstep crime.
- 26.3 The 33 new zones were launched in March 2013. Street signs have been erected at the main exit and entrance points to the areas, informing traders that they are entering an area where residents do not buy goods and services at the door. Each household received an information booklet offering advice, as well as a door sticker to deter unwanted callers. The new zones cover the following areas: Miles Hill, Beckhills and Potternewtons, Scott Wood Lane and Woodland Terrace.
- 26.4 In addition we have also implemented a no cold calling zone on St Margaret's View on the request of residents in October 2012.

## 27. Leeds Anti-Social Behaviour Team

- 27.1 LASBT data for 2012/13 has been drawn from on a total of 528 surveys from 1060 named victims (an overall response rate of 50%)
- 27.2 The charts below outline by ward the number of enquiries received, new cases opened and a summary of the legal outcomes.

LASBT Enquiries Received 2012/13	
Ward	Grand Total
Chapel Allerton	88
Moortown	30
Roundhay	32

LASBT New Cases Opened 2012/13	
Ward	Grand Total
Chapel Allerton	53
Moortown	9
Roundhay	19

LASBT Legal Outcomes 2012/13							
Ward	Adjourned	Adj. Possession proceedings	ASBO granted	Injunction granted	Suspended possession order	Undertaking agreed	Total
Chapel Allerton	1	1	1	3	1		7
Moortown	1	1				1	3
Roundhay				2			2

## 28. Ward Performance

### Inner North East



31/03/2013									
Burglary Dwelling	159	-78	-32.9%	222	-3	-1.3%	166	-140	-45.8%
Burglary Elsewhere	91	4	4.6%	213	61	40.1%	114	-13	-10.2%
Criminal Damage	132	-8	-5.7%	178	7	4.1%	296	-207	-41.2%
Drugs Offences	38	-1	-2.6%	48	-26	-35.1%	242	21	9.5%
Fraud & Forgery	42	27	180.0%	50	7	16.3%	71	30	73.2%
Handling	3	1	50.0%	1	0	0.0%	2	-9	-81.8%
Other Crime	17	2	13.3%	19	-2	-9.5%	41	-40	-49.4%
Other Theft	275	-2	-0.7%	471	-11	-2.3%	347	-154	-30.7%
Robbery	16	-19	-54.3%	22	-20	-47.6%	63	-10	-13.7%
Sexual Offences	12	-8	-40.0%	24	13	118.2%	29	10	52.6%
Theft from Motor Vehicle	142	-60	-29.7%	193	-111	-36.5%	209	-32	-13.3%
Theft of Motor Vehicle	15	1	7.1%	25	1	4.2%	32	-17	-34.7%
Violent Crime	95	-36	-27.5%	134	-35	-20.7%	276	-104	-27.4%
Recorded Crime Total	1037	-177	-14.6%	1600	-119	-6.9%	1888	-665	-26.0%

30.3 The below statistics show anti-social behaviour calls recorded by West Yorkshire Police from 1st April 2012 until March 31st 2013 by area committee and further broken down into ward areas the Inner North East area has seen an overall reduction of 28.1% (623 less incidents reported).

INNER NORTH EAST		
Incidents	Change	% Change
1596	-623	-28.1%

MOORTOWN			ROUNDHAY			CHAPEL ALLERTON		
Incidents	Change	% Change	Incidents	Change	% Change	Incidents	Change	% Change
385	-158	-29.1%	425	-206	-32.6%	786	-259	-24.8%

**31. Public Confidence and User Satisfaction in the Police (Roundhay, Moortown and Alwoodley)**

Public Confidence	March 2012	March 2013

Confidence in local policing	70.3%	66.2%	-4.1%
Overall Satisfaction	88.0%	83.2%	-4.8%
Perceptions of ASB increasing	7.3%	4.0%	-3.3%

### 32. Public Confidence and User Satisfaction in the Police (Chapel Allerton)

Public Confidence	March 2012	March 2013	
Confidence in local policing	69.1%	64.2%	-4.9%
Overall Satisfaction	83.6%	83.4%	-0.2%
% of residents who think ASB has increased	8.9%	7.7%	-1.2%

### 33. Corporate Consideration

### 34. Consultation and Engagement

34.1 The North East Divisional Safety partnership works in partnership with the voluntary and community sector and when necessary carries out statutory consultation as appropriate.

### 35. Equality and Diversity / Cohesion and Integration

35.1 Consideration is given to the equality impact of delivering the Safer Leeds strategy across North East Police Division. Where a negative equality impact is identified action will be taken to mitigate the impact or risk.

### 36. Council Policies and City Priorities

36.1 The North East Divisional community safety partnership delivers directly against the Safer and Stronger Communities Board Partnership plan 2011-2015.

### 37. Resource and Value for Money

37.1 The work undertaken by the DCSP is underpinned by maximisation of resources through effective partnership work.

### 38. Legal Implications, Access to Information and Call In

38.1 There are no exempt or confidential information contained in this report

38.2 There are no legal implications associated with this report



38.3 There are no key decisions associated with this report, so it is not subject to call in

**39. Risk Management**

39.1 There are no major risks associated with the content of this report

**40. Conclusions**

40.1 Overall a very successful year for North East in relation to overall crime reduction, public confidence and increased performance and perceptions in dealing with anti-social behaviour. The DCSP will continue to prioritise burglary dwelling during 2013/14 to ensure reductions are sustained and further improvements are made.

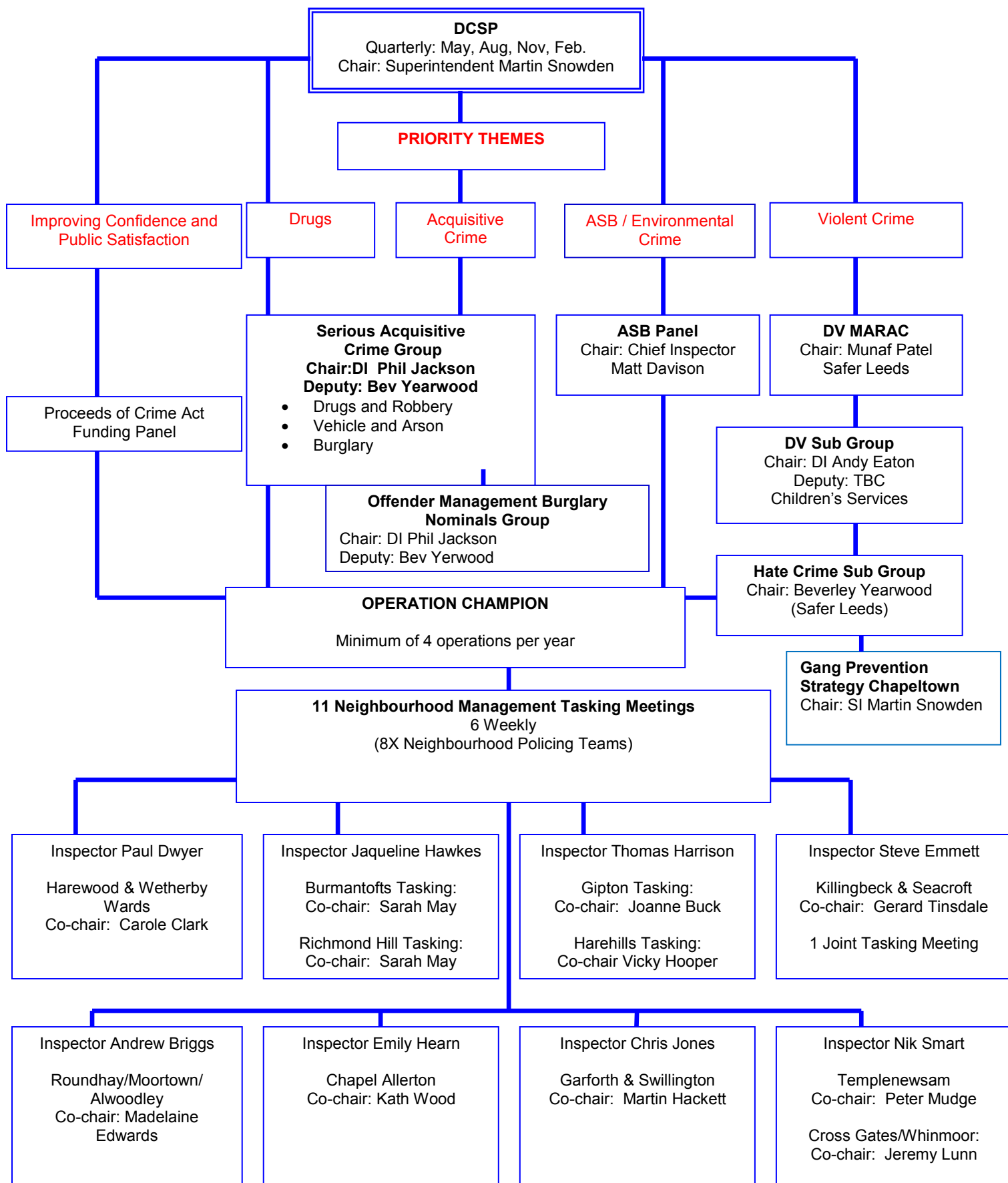
**41. Recommendations**

41.1 Members are asked to continue supporting the Divisional Community Safety Partnership in relation to prioritising and tackling Burglary Dwelling during 2013/14 through partnership work at neighbourhood level.

**42. Background Documents**

**43. Safer Leeds OBA Burglary Year End Report**

North East Division  
Divisional Community Safety Partnership



<b>Roundhay Alwoodley Moortown</b>				
<b>POCA Ref</b>	<b>Date</b>	<b>Brief Description</b>	<b>Organisation</b>	<b>Amount Paid</b>
430	05/03/2012	<b>Purchase of RDA Pony and Equipment</b> - to buy a pony and theraputic aids such as a saddle	Leeds Area Riding for the Disabled	£250
451	13/04/2012	<b>Roundhay Primart Schools Run for Fun</b> - family fun run across 8 primary schools in the area. Saturday 16th June in Roundhay Park,£ to purchase medals on ribbons.	Nina Whelan	£250
440	03/04/2012	<b>Badminton Coaching Under 19's</b> - Learn children to play badminton - to buy badminton rackets and shuttles and a net	Bijoy Badminton Club	£246
482	07/06/2012	<b>Cold Calling Control Zone Extension</b> - to assist in the extension of an already live cold calling control zone within RAM neighbourhood policing area - two streets off St Margarets View.	West Yorkshire Joint Services	£200
526	26/09/2012	<b>Leeds Area Police Sports and Social Club Ground Refurbishment</b> - we aim to provide facilities for both sport and social recreation to all its members and a wide range of visitors. If the application is successful the money will go towards new dug outs on the football field for wet weather conditions.	Leeds Area Police Sports and Social Club	£500
546	02/11/2012	<b>Arts Development for older people</b> - A group of older people on the Cranmer Bank estate meeting to learn new skills about painting and drawing and other creative skills	Moor Allerton Elderly Care	£250
557	18/02/2013	<b>Alderton Allotments Association</b> - The money will go towards providing raised beds & access suitable for the elderly and disabled so they can participate in the joys of growing their own vegetables and plants. We are anticipating the project will start around March/April 2013.	Alderton Allotments Association	£250
558	18/02/2013	<b>Junior Sightscreens</b> - Due to wear and tear and safety we had to scrap our old sightscreen in our junior net area. Having a white screen behind the bowlers arm is essential for vision of the batter and makes for a safer practice facility. Nets start in early April weather permitting.	North Leeds Cricket Club	£250
559	18/02/2013	<b>Friends of Alerton Grange Fields</b> - Friends of Allerton Grange Fields is a voluntary association of local residents seeking to create a cleaner, greener, safer environment. Its mission is to maintain and enhance Allerton Grange public playing fields.	Friends of Allerton Grange Fields	£250
571	25/02/2013	<b>Woodland Environment Work</b> - To finance tools and equipment for group to build and maintain works in Gledhow Valley Woods to protect and enhance the natural environment to encourage wildlife. Key start date April 2013	Friends of Gledhow Valley Woods	£242
576	01/03/2013	<b>Fun with arts and crafts</b> - Art and craft sessions led by art teacher developing skills in older disabled people, some with dementia.	Moor Allerton Care Centre	£250
579	08/03/2013	<b>Roundhay Primary Schools Run for Fun</b> - Provide a range of linked activities in the run up event and during the event to promote participation by all members.	Roundhay Primary Schools Fun Run Fund	£250
580	08/03/2013	<b>Shadwell Good Companions</b> - Funding would help to buy a New Age Kurling set to be used at each meeting. This would enable the group to provide an activity that was accessible to all members regardless of health and ability.	Good Companions	£250
582	14/03/2013	<b>Replacement of hut roof</b> - replacement of the roof of our large, garage sized, central hut which is used as a store and meeting place.	Meanwood Parkside Allotments	£250

Chapel Allerton				
POCA Ref	Date	Brief Description	Organisation	Amount Paid
453	41012	<b>International Gospel Concert</b> -August 6th is the 50th year of Jamaica's Independence. Planning celebrations starting with an international gospel concert. Concert will be held on 14th April which will include singing, poetry, dancing and drama.	Jamaica Society Leeds	£250
473	10/05/2012	<b>Charity Bike Ride Family Fun Day</b> - event to encourage fathers to part-take in healthy activities with their children and the whole family. Bouncy castle and st johns ambulance cover.	BHI	£250
439	23/03/2012	<b>Leeds Reach</b> - 2 x Panasonic HX-DC1 camcorder and one memory card	Leeds Reach	£250
446	05/04/2012	<b>Meanwood Olympics</b> - fun days on an Olympic theme 1st, 8th, 15th August at Woodhouse Cricket Club, Meanwood £ for medals and prizes.	Zest Health for Life	£250
476	21/05/2012	<b>Childrens School Safety</b> - banner to stop peop's parking outside Millfield Primary School	Friends of Millfield Primary School	£150
481	07/06/2012	<b>Luncheon Outing for Button Hill Residents</b> - a day outing, including meals for residents and transport costs.	Button Hill Residents Association	£250
483	19/06/2012	<b>Shamirah Grant Memorial Fun Day &amp; Fundraising Event</b> - To mark the anniversary of her passing and to rise funds as well as the profile of the organisation the Shamirah Grant Arts Foundation are staging its annual celebration event in memory of Shamirah Grant. The event will be an open air event and will be held on the Surestart play area adjacent to Cahpeltown Surestart Children Centre on Leopold Street, Leeds 7. The event will be targeted at children and young people from the local community and wider communities. It promises to be a carnival type atmosphere with plenty of fun activities and giveaways for all the family.	Shamirah Grant Arts Foundation	£250
486	19/06/2012	<b>Impact 2012 Sports and arts summer camp</b> - Impact 2012 is a sports and arts summer camp organised by Kingdom Performance Ministries and Chapeltown Community Netball Club. It will take place for two weeks (23rd July-3rd August) and will include a wide range of activities and events including netball/basketball, athletics, team games, dance, drama and performance.	Chapeltown Community Netball Club	£250
489	19/06/2012	<b>Chapeltown Community Play Scheme</b> - School holiday's centre for local children in the area of Chapeltown.	Chapeltown Community Centre	£250
497	03/07/2012	<b>Welfare Reform VCSF Awareness Event</b> - Event is to provide information and training for VCSF groups on the welfare reform changes to enable them to support clients and assist the ENE Area Leadership Team priority of mitigating the impact of the changes. The event is being organised in partnership with the Chapeltown CAB and Health.	Chapeltown CAB	£250
495	03/07/2012	<b>Famtaastic Fun Day</b> - A family day out for the whole family. This event will be organised by Chapeltown Community Church on the 4th August 2012. The intention is for families to participate from Chapel Allerton, Scott Hall & Moortown.	Reconciliation Centre	£250
496	03/07/2012	<b>Caribbean Cricket Soca Festival</b> - This festival will be a one day community & family event, taking place at the long established Leeds Caribbean Cricket Club off Scott Hall Road. With a focus around cricket and Caribbean music, the event will also feature many kids activites, food and product stalls and fairgrounds for all the community to enjoy.	Harwood Williams	£250
500	06/07/2012	<b>Busy Bees</b> - Feel Good Factor hosts a women's social group which meets weekly with regular attendance of up to 15 women. It was originally formed to bring young and older women together to learn practical skills such	Feel Good Factor	£250

		as knitting, crocheting and to share good old fashioned tips. Busy Bees now wishes to expand its creative activities to learning to sew for those who can't, taught by those that can in the group and as such are requesting £250 to buy 2 sewing machines.		
503	20/07/2012	<b>Day at the Seaside. Targeted Families Meanwood</b> - A day out for families who will not be having holidays.	Zest Health for Life	£250
513	13/08/2012	<b>Holy Rosary - Parish Stories</b> - To celebrate the 75th anniversary of the parish we will be producing a booklet called 'Parish Stories' which gives an account of the stories of a number of the people who attend our church and the journeys they took to reach Chapeltown. Our church includes a wide range of people and the booklet will include the interesting experiences of people with heritage from around the world including Eritrea, Ivory Coast, Pakistan, Germany, Italy, the Caribbean and of course Ireland. This will combine with the stories of people who have lived locally all their lives. The booklet will be made available to other community groups as well as mosques, gurdwaras and other churches who will also be invited to our celebration event, along with local Councillors, on 30th September. We hope this will contribute to our aims of building positive relations within Chapeltown.	Holy Rosary - Parish Stories	£250
515	28/08/2012	<b>This Generation</b> - Intergenerational education conference organised & planned by a youth & adult committee. The objective is for young people to debate social, personal & educational challenges.	Black Achievers Wings Award	£250
523	25/09/2012	<b>CFYDC Under 13s Football Team</b> - We seek funds to help provide the children with vital equipment and kit – this will seriously help in their development but more importantly raise their self-esteem and give them a sense of worth.	CFYDC	£500
539	25/10/2012	<b>Know yourself, Sell Yourself</b> - Unity Housing Association through its employment services team would like to run training programmes to motivate and facilitate people into work or training. The Team will support people in a relaxed environment to learn new skills and then help them progress onto further training or work. We feel this will help people that do not like formal learning gain the skills they need to move forward and prevent people offending/ reoffending. The overall aim is to improve the level of unemployment in deprived areas and provide training in I.T to improve digital inclusion prior to welfare reform changes.	Unity Housing Association	£500
540	25/10/2012	<b>Leeds Wado Academy</b> - Local voluntary group, teaching local children / adults a type of Kung Fu / karate. The group runs twice a week in the local community.	WADO Academy	£297
574	01/03/2013	<b>Chapeltown Football Juniors</b> - We would like some funding to support buying some portable 9 v 9 goals for start of season 2013/14. As the FA have set new Systems for Junior Football, Portable 9 v 9 goals are Mandatory for next season beginning of June 13.	CFYDC	£250
581	14/03/2013	<b>Gledhow Cricket Club</b> - Young People in the North East Leeds Area; (currently 50 young people mainly from Harehills, and Chapeltown) Cricket Equipment and Training Aids.	Gledhow Cricket Club	£250





